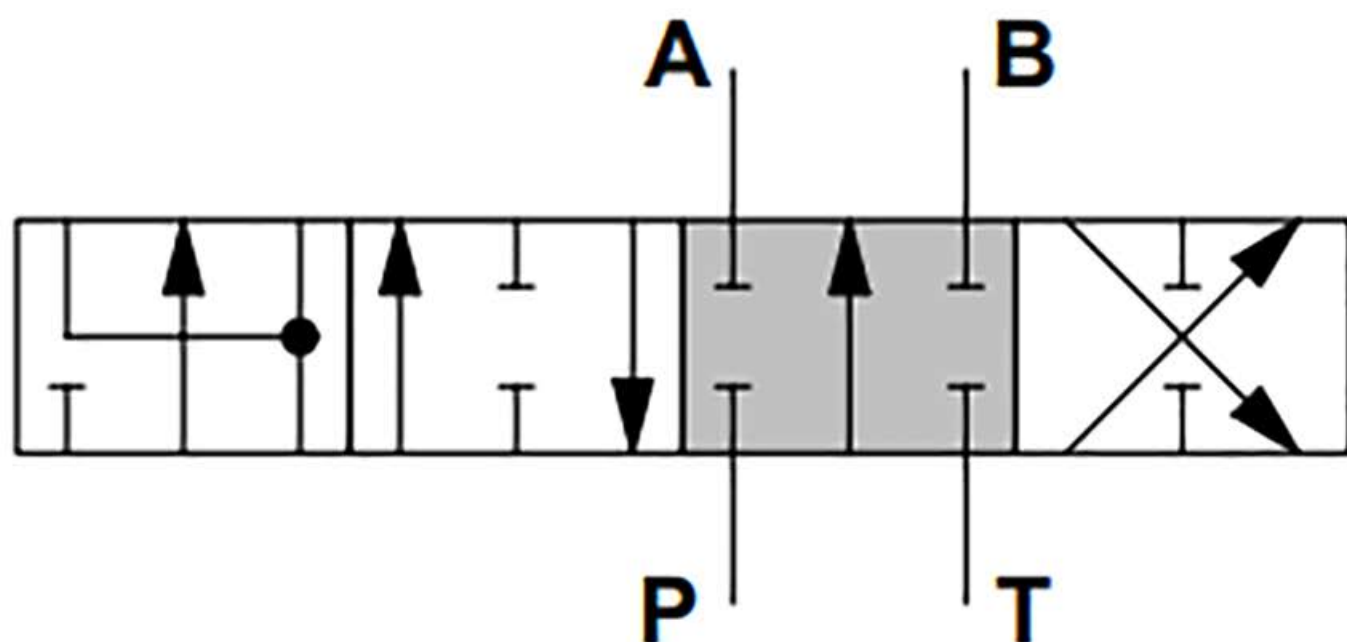


## 5BY (30 01 3654) spool type

Double acting, with A and B closed in neutral position, 4 positions, floating in position 3, with spool out

3      1      0      2



### Spool stroke

position 1: + 5.5 mm (+ 0.22 in)

position 2: - 5.5 mm (- 0.22 in)

position 3: + 10.5 mm (+ 0.41 in)