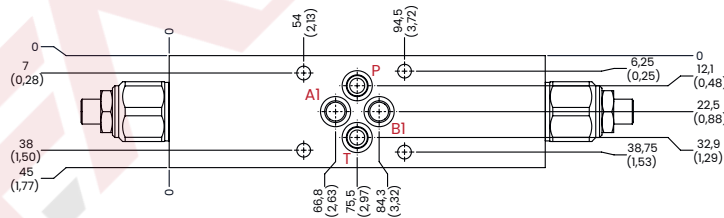
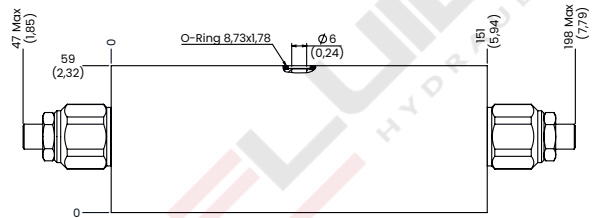
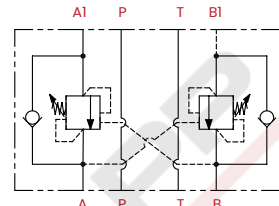
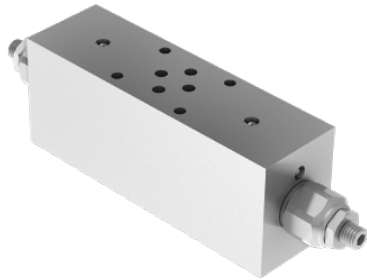


DOUBLE COUNTERBALANCE VALVES - CETOP 3 FOR OPEN CENTER

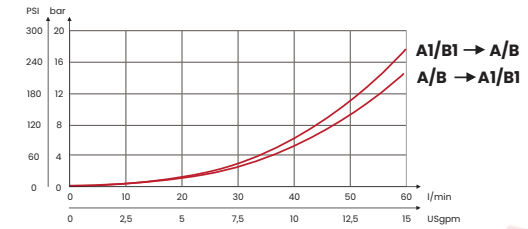
Counterbalance valves are used to keep a load locked, the built-in relief valve protects the system from overpressure in the cylinder by draining the oil.

HYDRAULIC CIRCUIT



mm [Inches]

PERFORMANCES



TAMPER PROOF CAP M10



CODE
62200021

ORDERING CODE

CODE	TYPE	F ports	MAX FLOW l/min [USgpm]	MAX PRESSURE bar [PSI]	STANDARD SETTING bar [PSI]	RANGE SPRING bar [PSI]	INCREASE TO TURN bar [PSI]	PILOT RATIO	WEIGHT kg [lb]
FA2081	BCA3C21	CETOP 3	60 [15,99]	350 [5075]	210 [3045]	30/210 [435/3045]	80 [1160]	1:4,25	3,15 [6,93]
FA2082	BCA3C35				350 [5075]	60/350 [870/5075]	135 [1960]	On request 1:8,1	
			Standard setting 350 bar [5075 PSI] to 5 l/m [1,32 USgpm]		Standard setting 210 bar [3045 PSI] to 5 l/m [1,32 USgpm]				
Steel body (on request aluminium body - stainless steel AISI 316L body)									