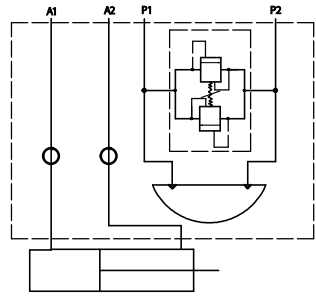
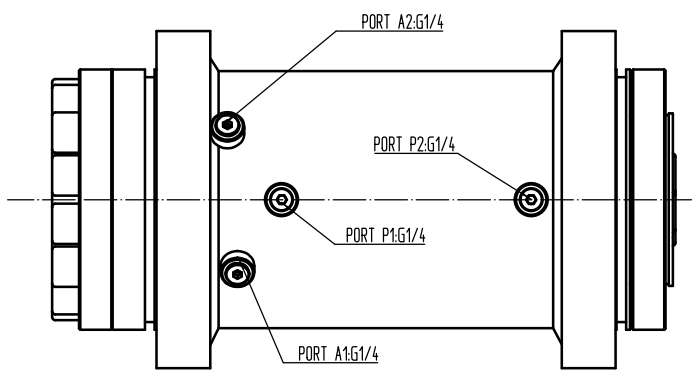
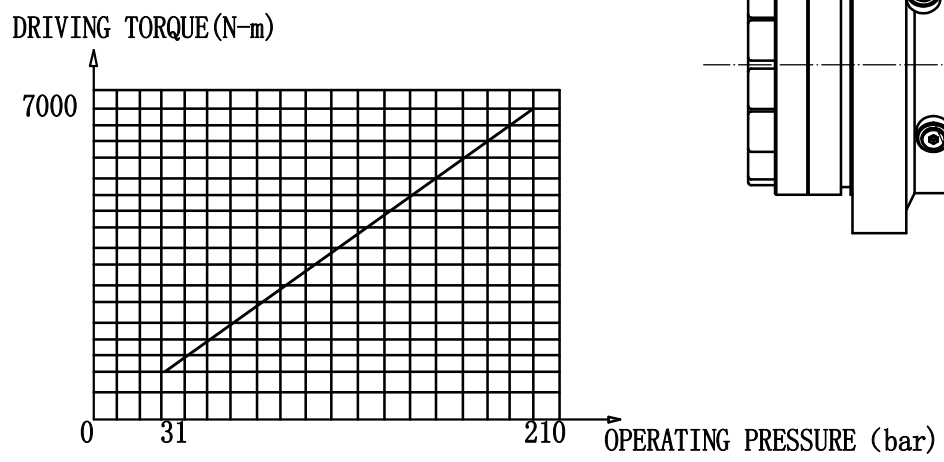


1. PRESSURE APPLIED TO PORT P1, FLANGES ROTATE 90° TO AA
2. PRESSURE APPLIED TO PORT P2, FLANGES ROTATE 90° TO BB
3. FLUID PORTS CONFORM TO ISO 1179-1



PERFORMANCE SPECIFICATIONS	
ROTATED TORQUE (N-m)	7000
HOLDING TORQUE (N-m)	20000
RATED PRESSURE (Mpa)	21
ROTATION (°)	180
DISPLACEMENT (cc)	2000
TEST PRESSURE (Mpa)	31
OPERATING TEMPERATURE (°C)	-17/+71
BREAKAWAY PRESSURE (Mpa)	3.1MAX
MAXIMUM BACKLASH (°)	0.5
APPROXIMATE WEIGHT (KG)	90
RADIAL CAPACITY (KG)	3800
AXIAL CAPACITY (KG)	2900
EXCAVATOR WEIGHT (t)	8
PAINT COLOR	GRAY

LSS-070-180BDYJC

