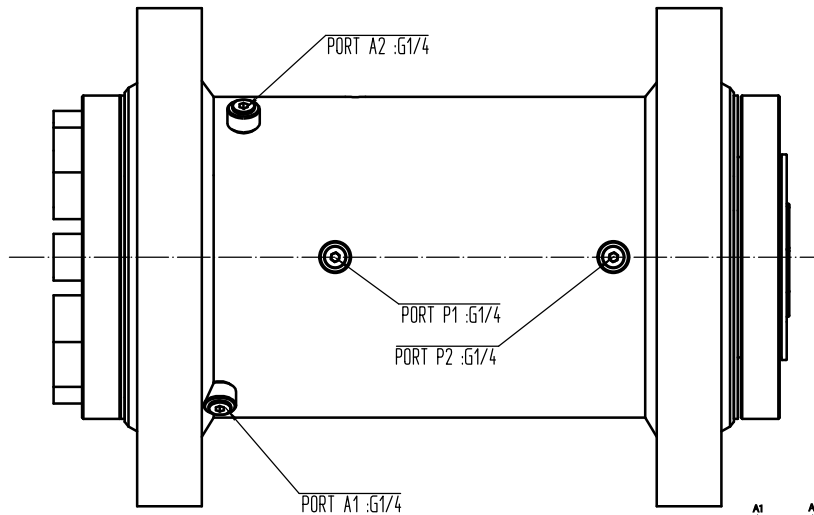
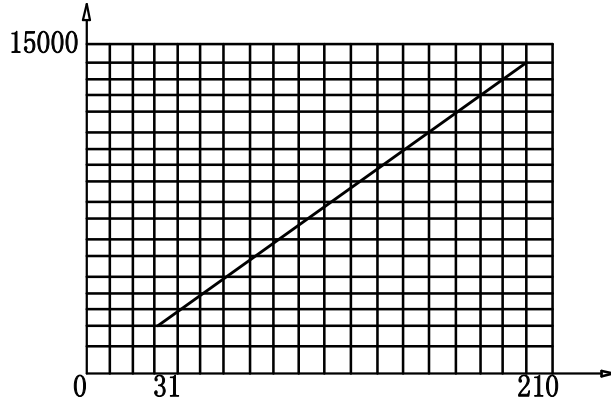


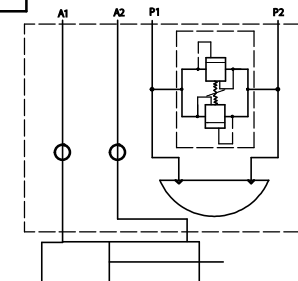
1. PRESSURE APPLIED TO PORT P1, FLANGES ROTATE 67 ° TO AA
2. PRESSURE APPLIED TO PORT P2, FLANGES ROTATE 67 ° TO BB



DRIVING TORQUE (N-M)



OPERATING PRESSURE (bar)



PERFORMANCE SPECIFICATIONS

ROTATED TORQUE (N-m)	16000
HOLDING TORQUE (N-m)	43000
RATED PRESSURE (Mpa)	21
ROTATION (°)	134
DISPLACEMENT (cc)	3000
TEST PRESSURE (Mpa)	31
OPERATING TEMPERATURE (°C)	-17/+71
BREAKAWAY PRESSURE (Mpa)	3.1MAX
MAXIMUM BACKLASH (°)	0.5
APPROXIMATE WEIGHT (KG)	200
RADIAL CAPACITY (KG)	7200
AXIAL CAPACITY (KG)	4900
EXCAVATOR WEIGHT (t)	20
PAINT COLOR	GRAY

LS5-150-134-BDYJC

