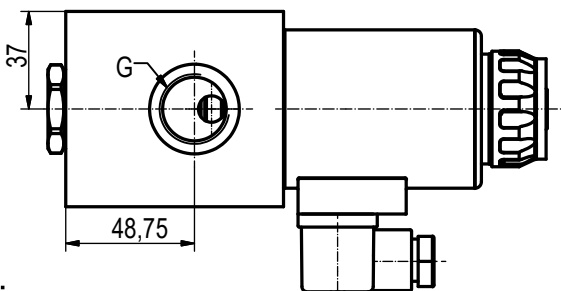
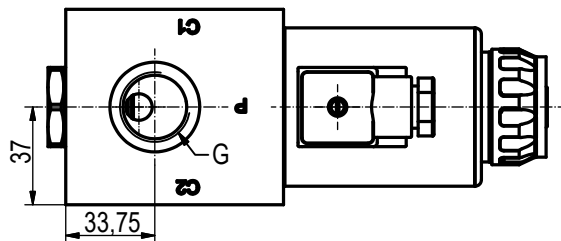
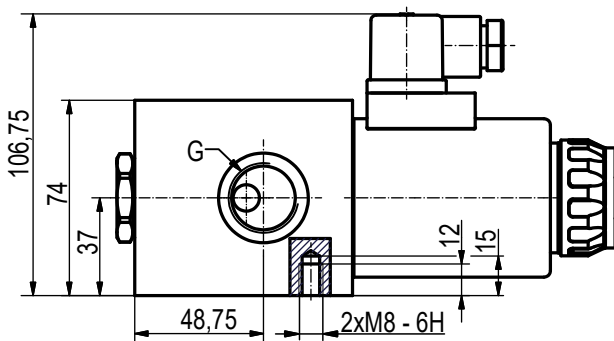
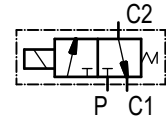
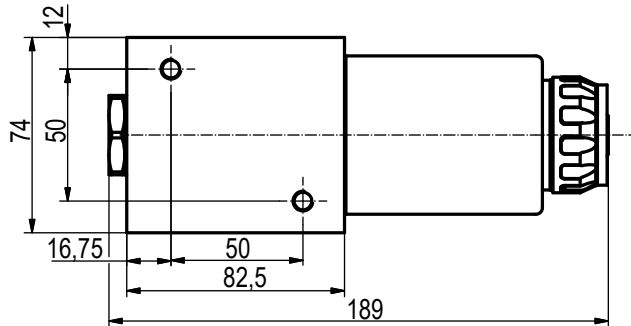
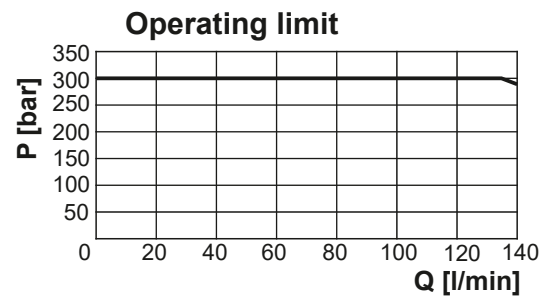


Solenoid Operated Diverter Valve, 3 Ways, 3/4" BSP



Note:

1. All performances and calibration are carried out by using hydraulic oil with viscosity approx 46 cSt at 50 °C.
2. Tightening torque for the solenoid - 25 N.m.



Internal leakage - 10 cm³/min
mineral oil with 46 cSt viscosity
and at 100 bar pressure

TECHNICAL DATA		
General		
Ambient temperature	°C	-20...+50
Hydraulic		
Maximal pressure	bar	250
Maximal flow rate	L/min	140
Working fluid - mineral oil		
- viscosity	mm ² /s	10...100
- filtration level	µm	25 or better
- temperature	°C	-20...+80
Power supply		
Voltage	V DC	12±5% 24±5%
	V AC	110/50Hz 220/50Hz